

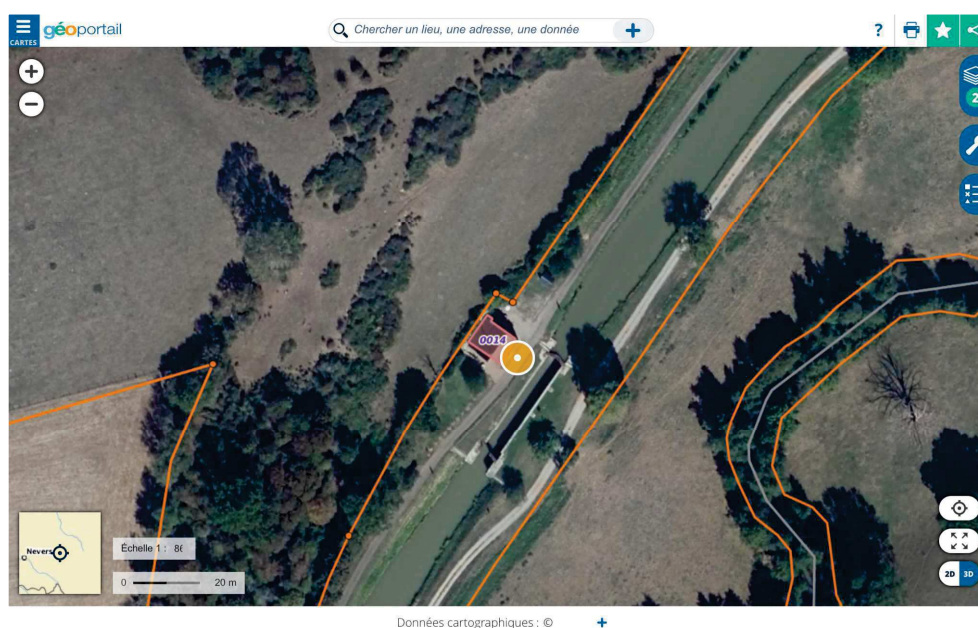
EN PRÉSENCE DE :

Madame BAROUGIER Hélène gestion du patrimoine pour le département de la Nièvre, ainsi déclaré,
Monsieur DE ROSSI Stéphane représentant les Voies navigables de France, ainsi déclaré.

OÙ ÉTANT J'AI PROCÉDÉ AUX CONSTATATIONS SUIVANTES :

ME 17 VL Eguilly

Localisation



1. Image fournie à titre d'illustration (Source [geoportail.gouv.fr](https://www.geoportail.gouv.fr)) <https://www.geoportail.gouv.fr/carte>

Façade Est



1.



2.



3.



4.



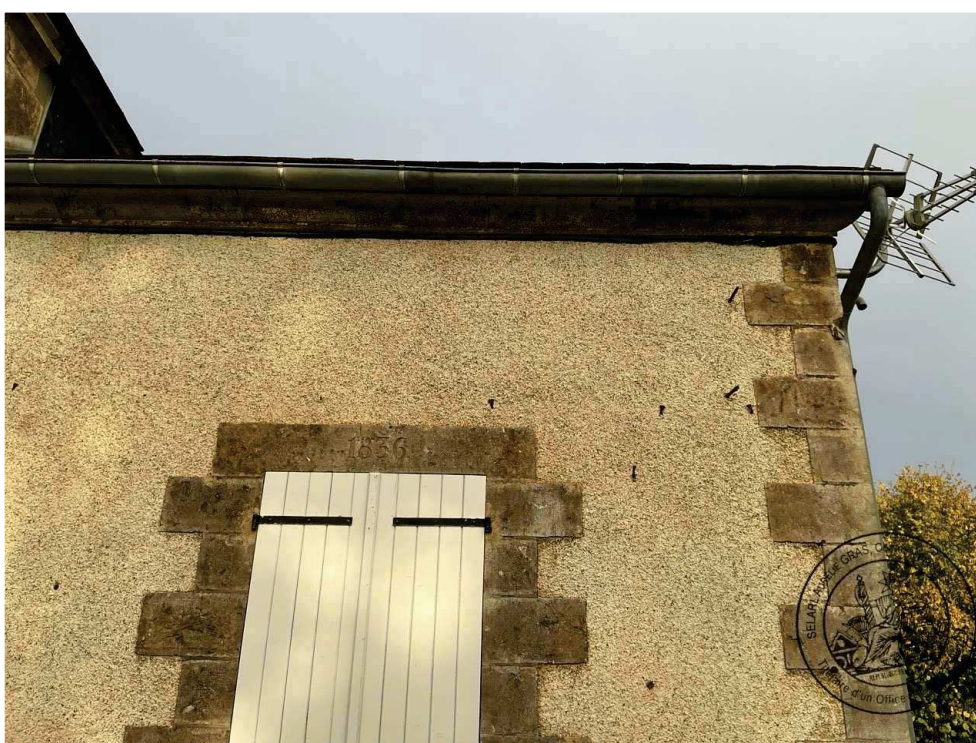
5.



6.



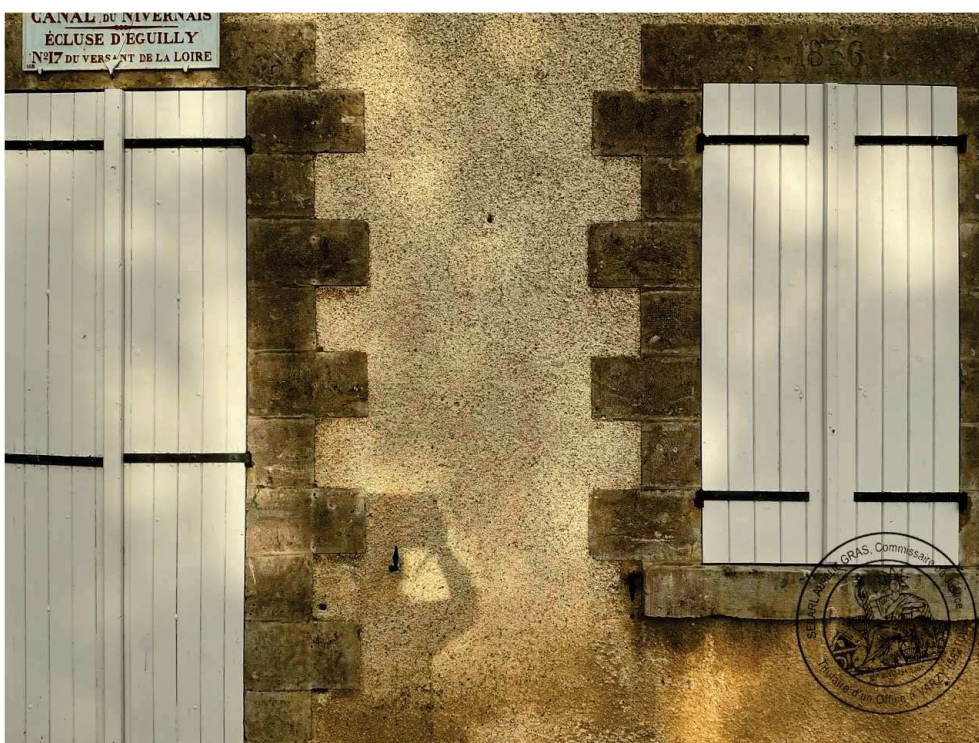
7.



8.



9.



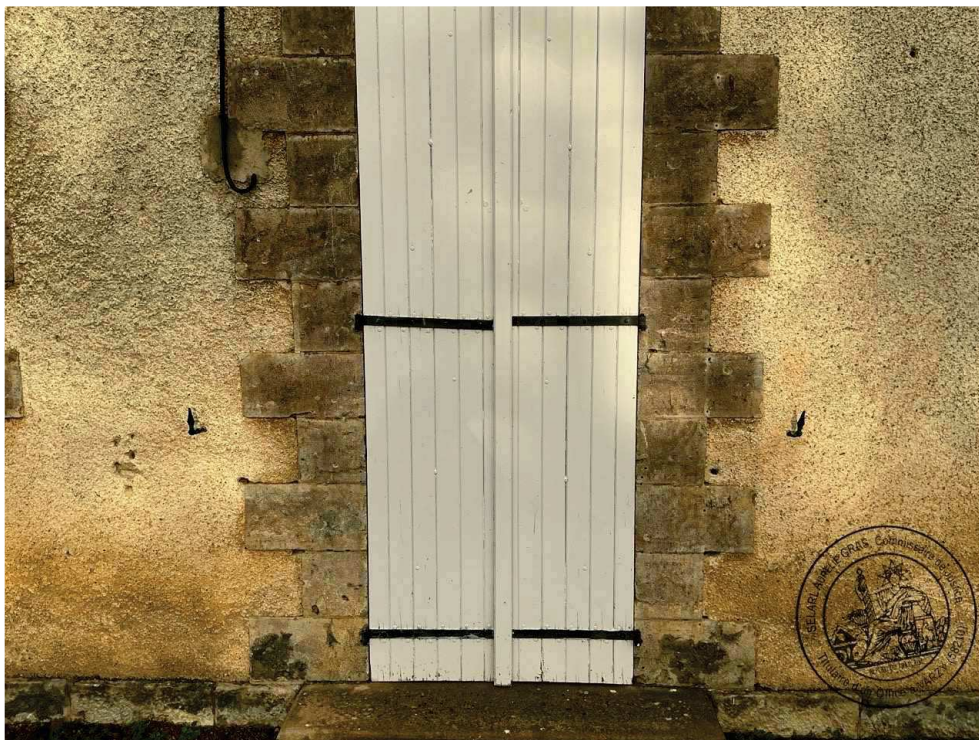
10.



11.



12.



13.



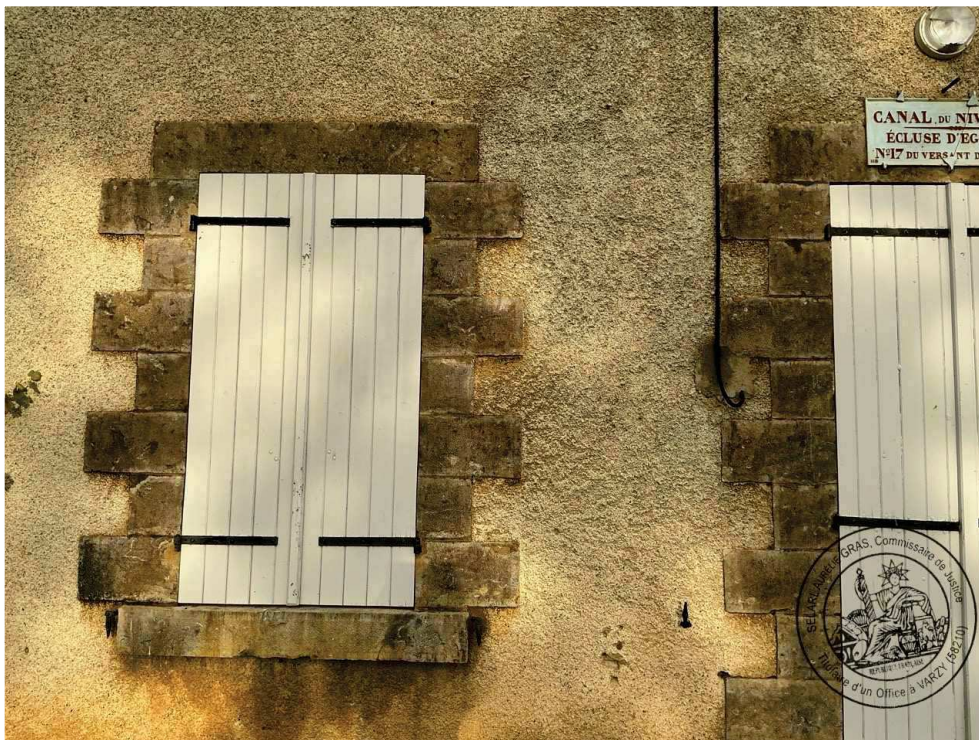
14.



15.



16.



17.



18.



19.



20.

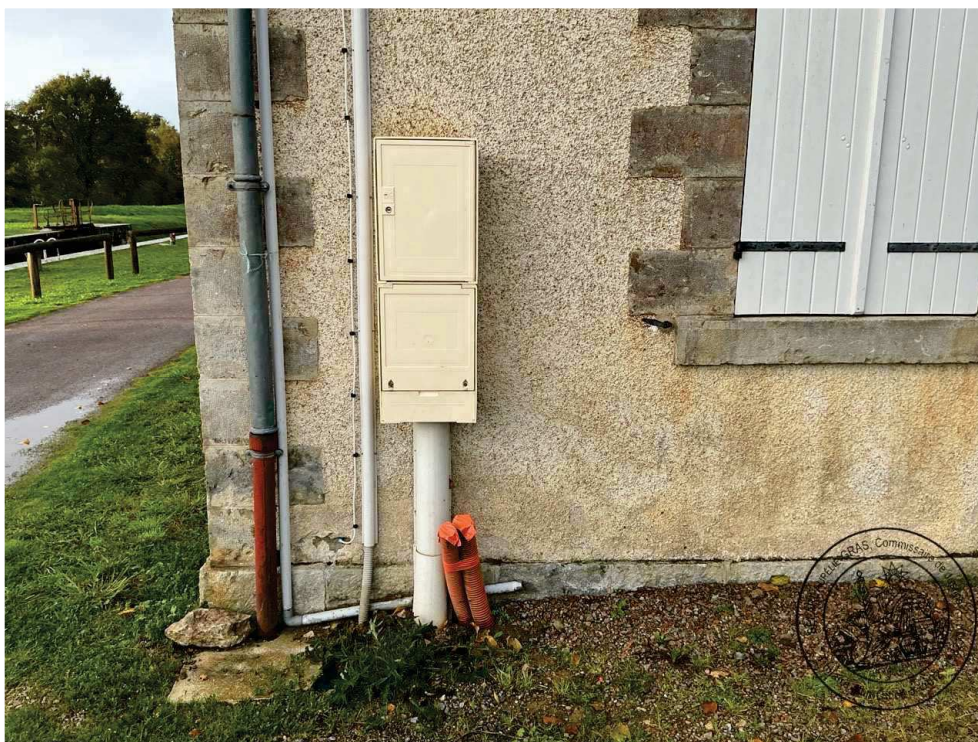


21.

Façade Nord



1.



2.



3.



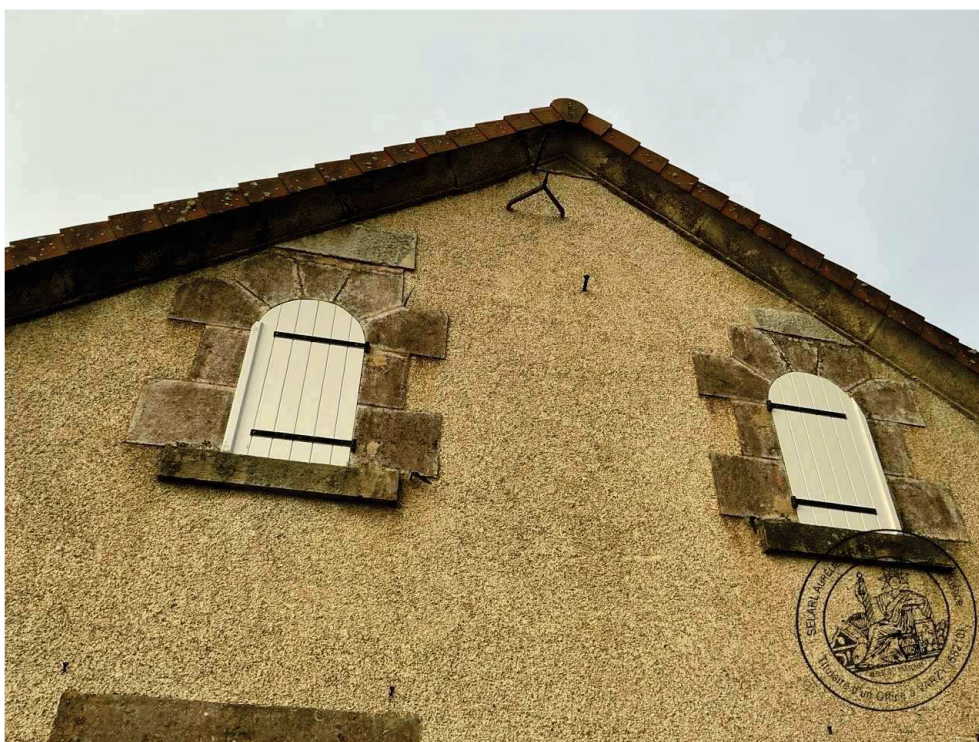
4.



5.



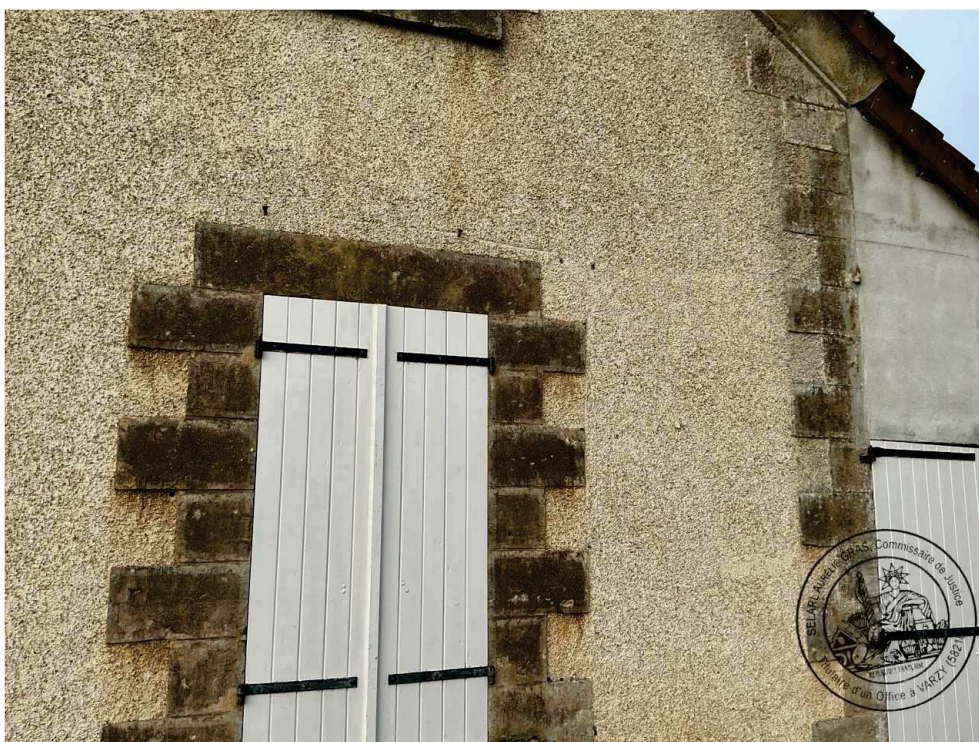
6.



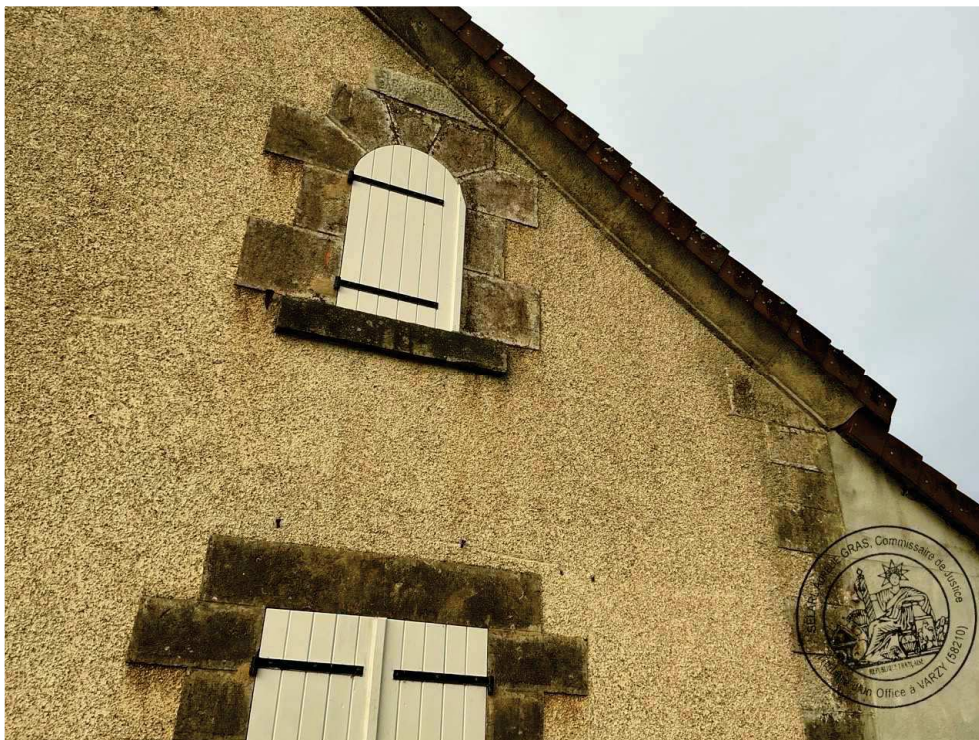
7.



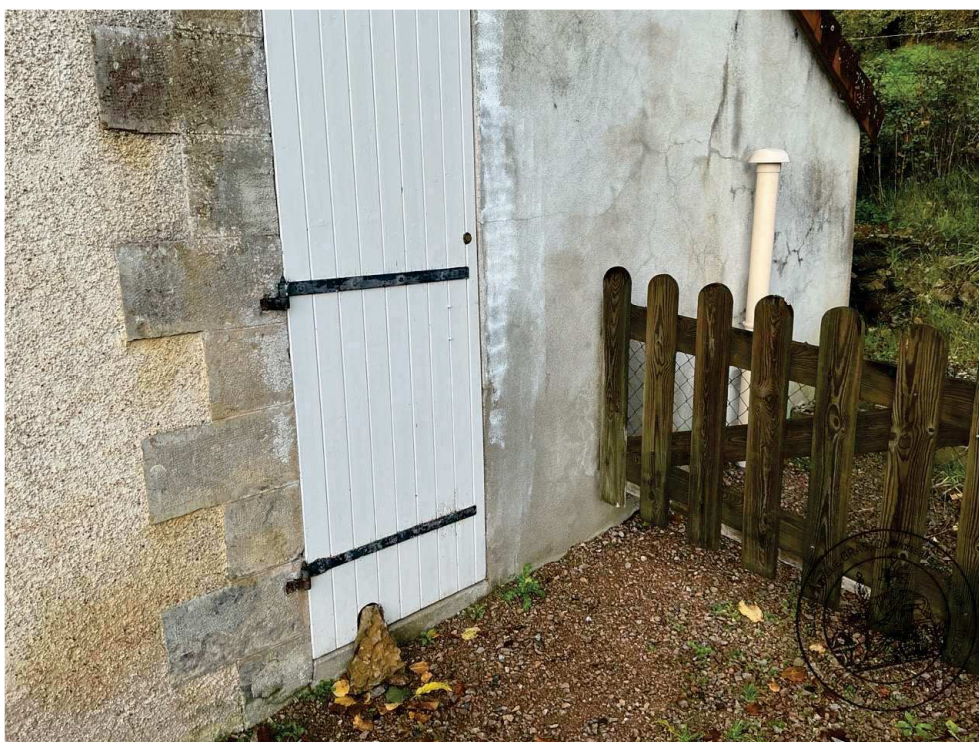
8.



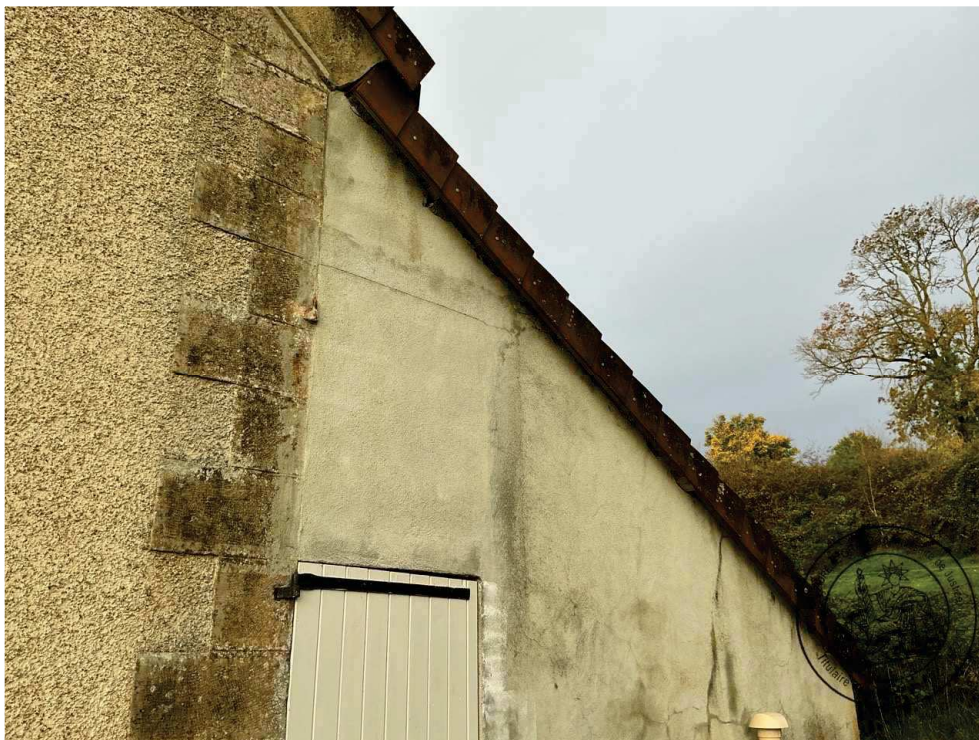
9.



10.



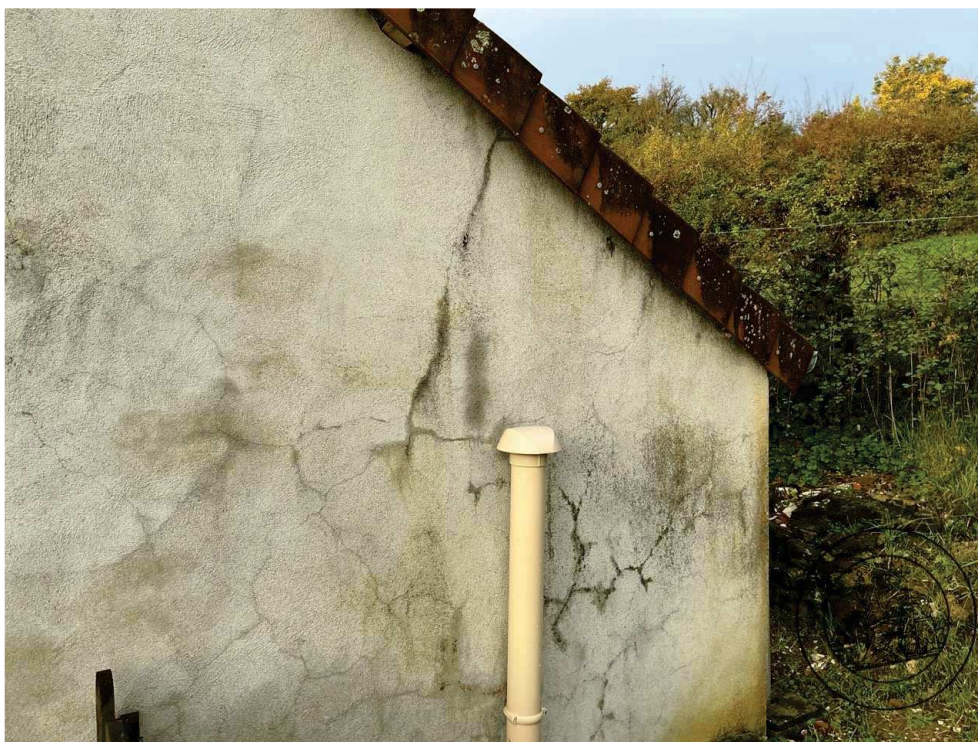
11.



12.



13.



14.

Façade Sud



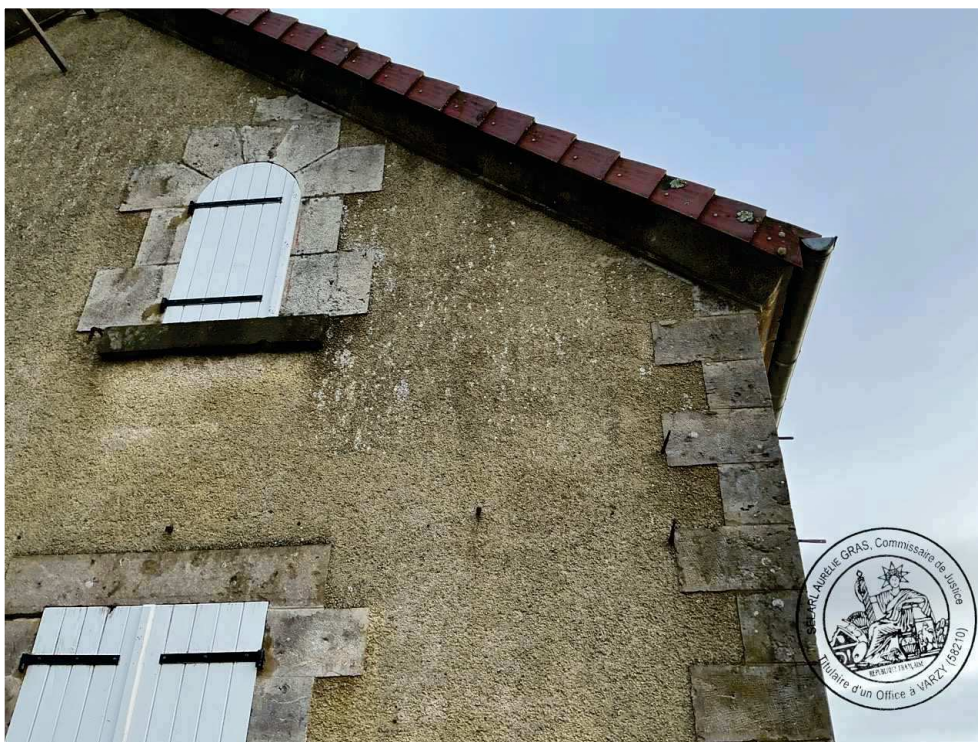
1.



2.



3.



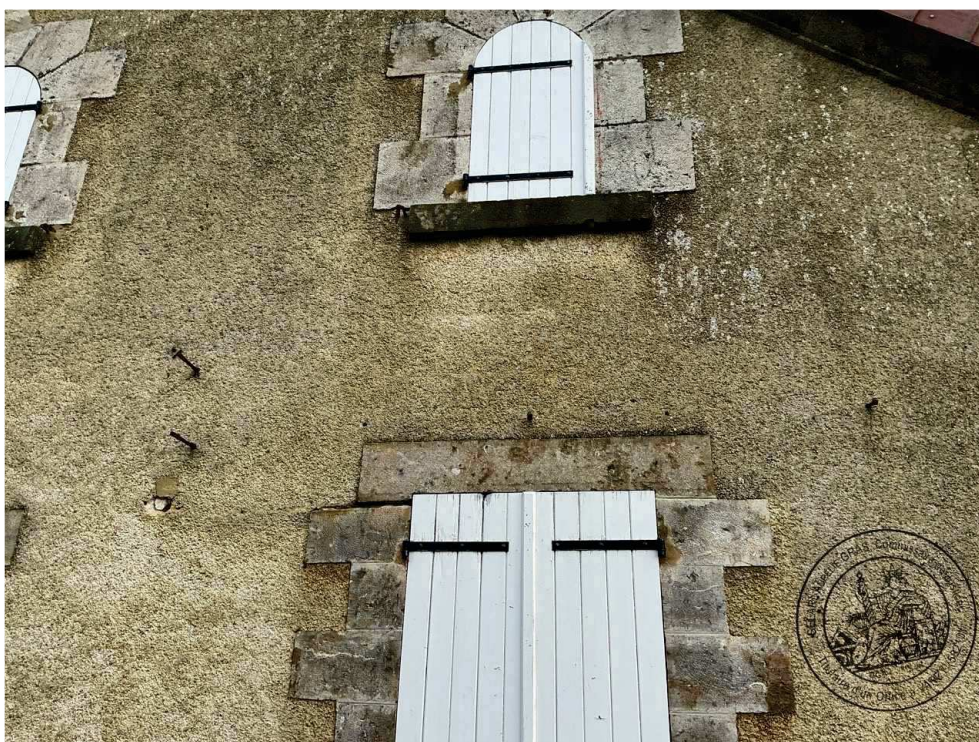
4.



5.



6.



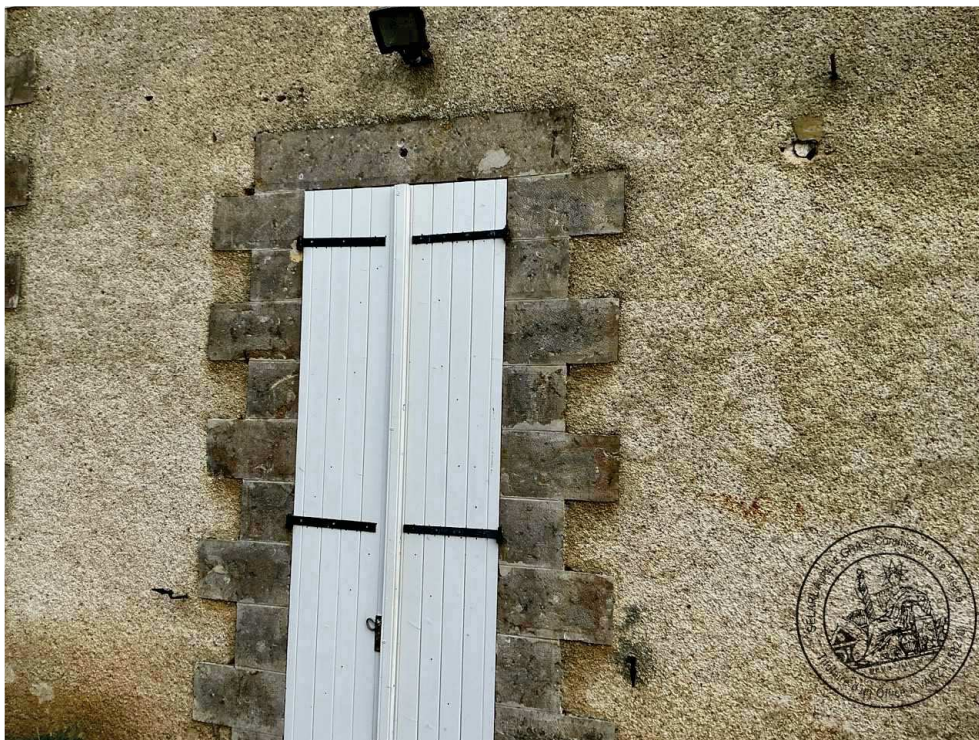
7.



8.



9.



10.



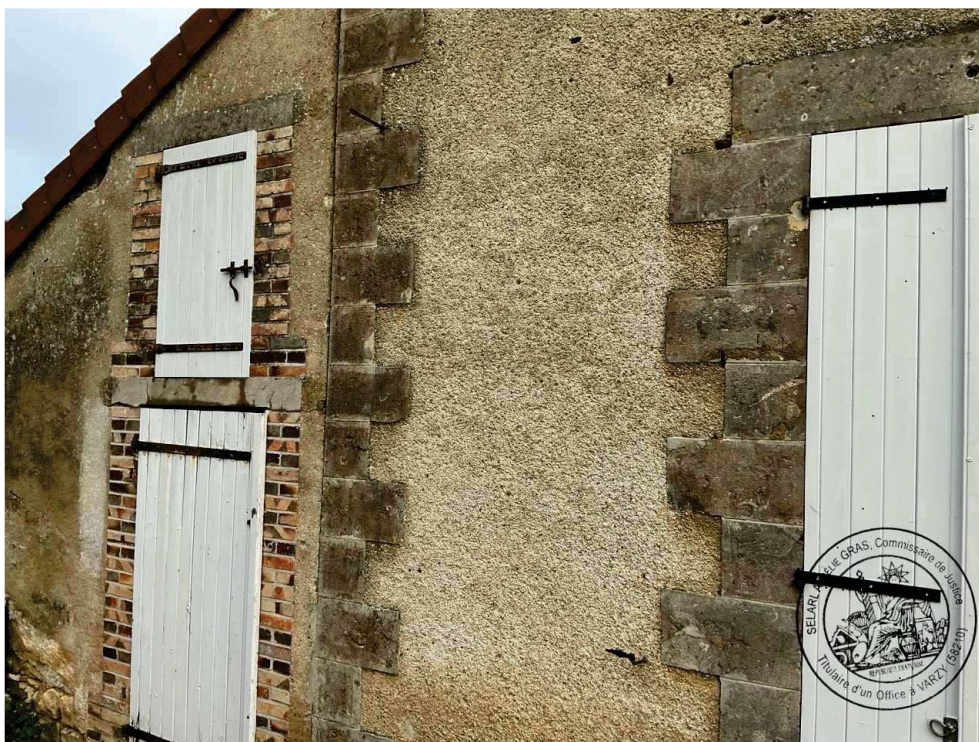
11.



12.



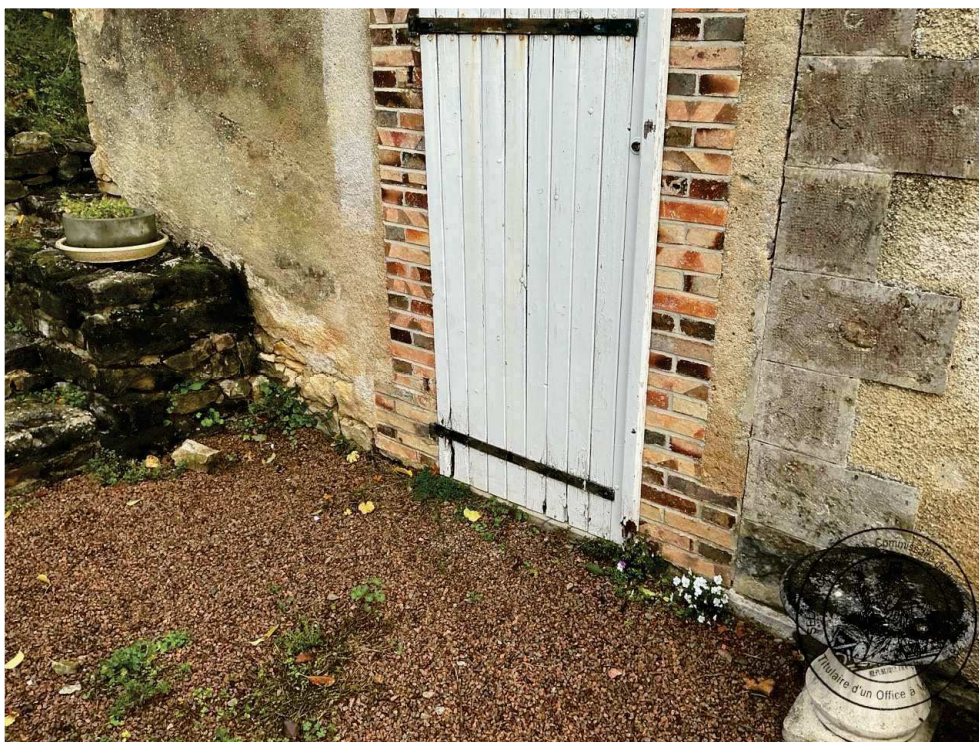
13.



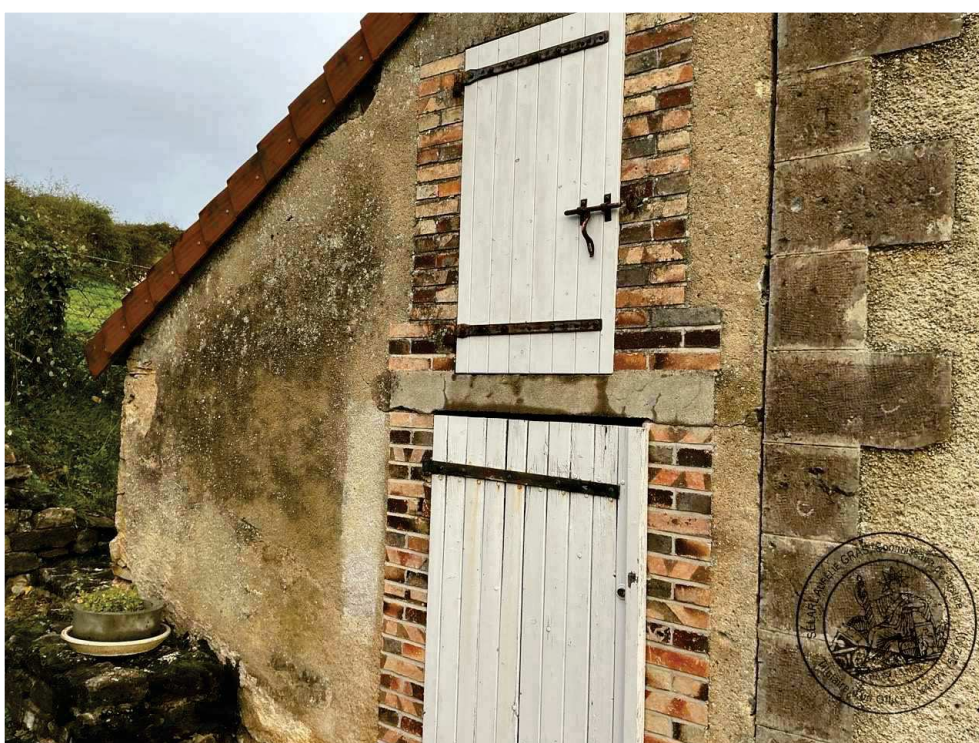
14.



15.



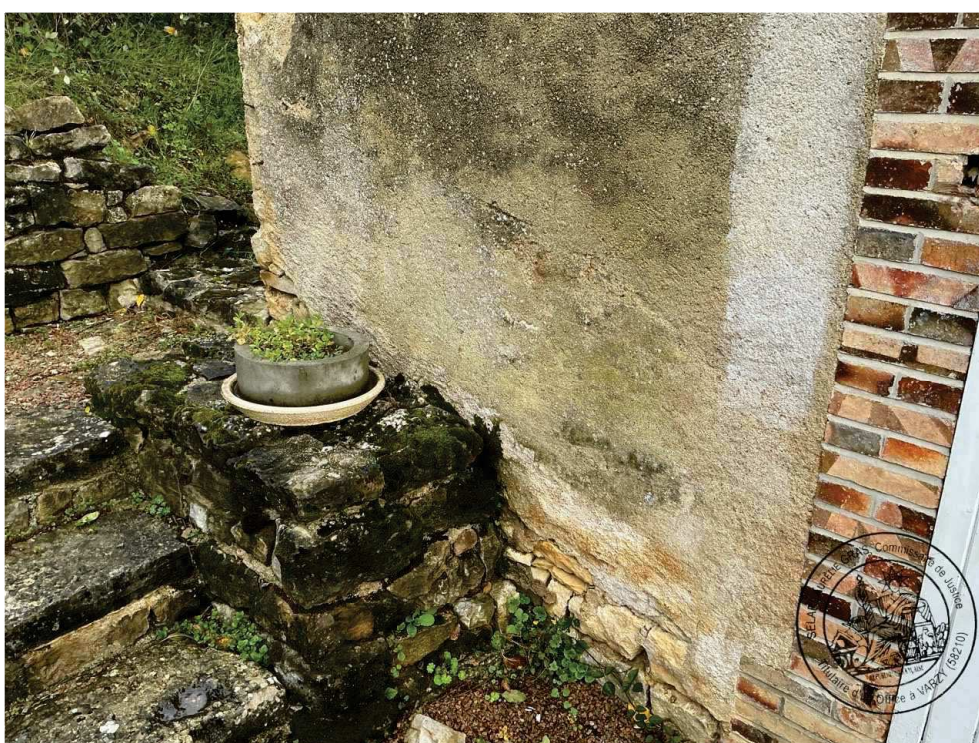
16.



17.



18.



19.



20.

Façade Est



1.



2.



3.



4.



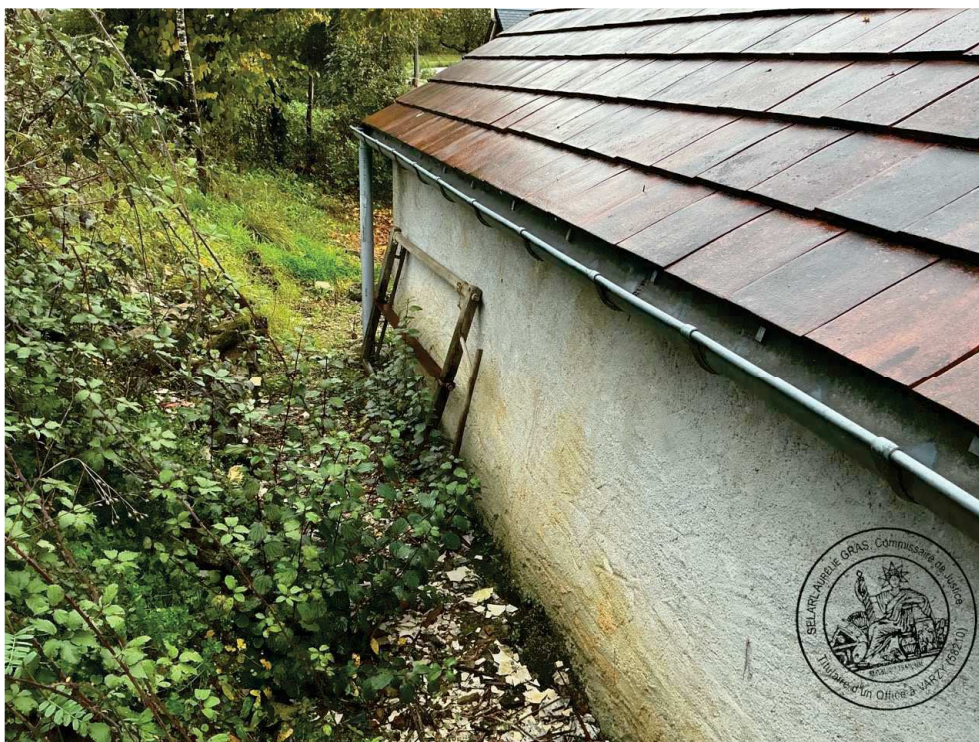
5.



6.



7.



8.

Périphérie maison éclusière



1.



2.



3.



4.



5.



6.



7.



8.



9.



1.



2.



3.



4.